

Air Force Center for Engineering and the Environment

Integrity - Service - Excellence



Capital Investment Management (CM)

Colonel Michael Hutchison
Chief, Capital Investment
Management Division

28 Jul 09



Agenda

- **Our Services**
- **CM Organization**
- **Program Summary**
- **Execution Options**
- **FY10+ MILCON Delivery Strategy**
- **FY10 MILCON Opportunities**
- **FY10 ERA Opportunities**



Our Services

■ Capital Construction (MILCON):

Provide Design and Construction Management (DM/CM) services for all active duty AF MILCON projects



■ Environmental Restoration (ERA):

Provide overall program management for active duty AF program to include project validation, prioritization, and execution

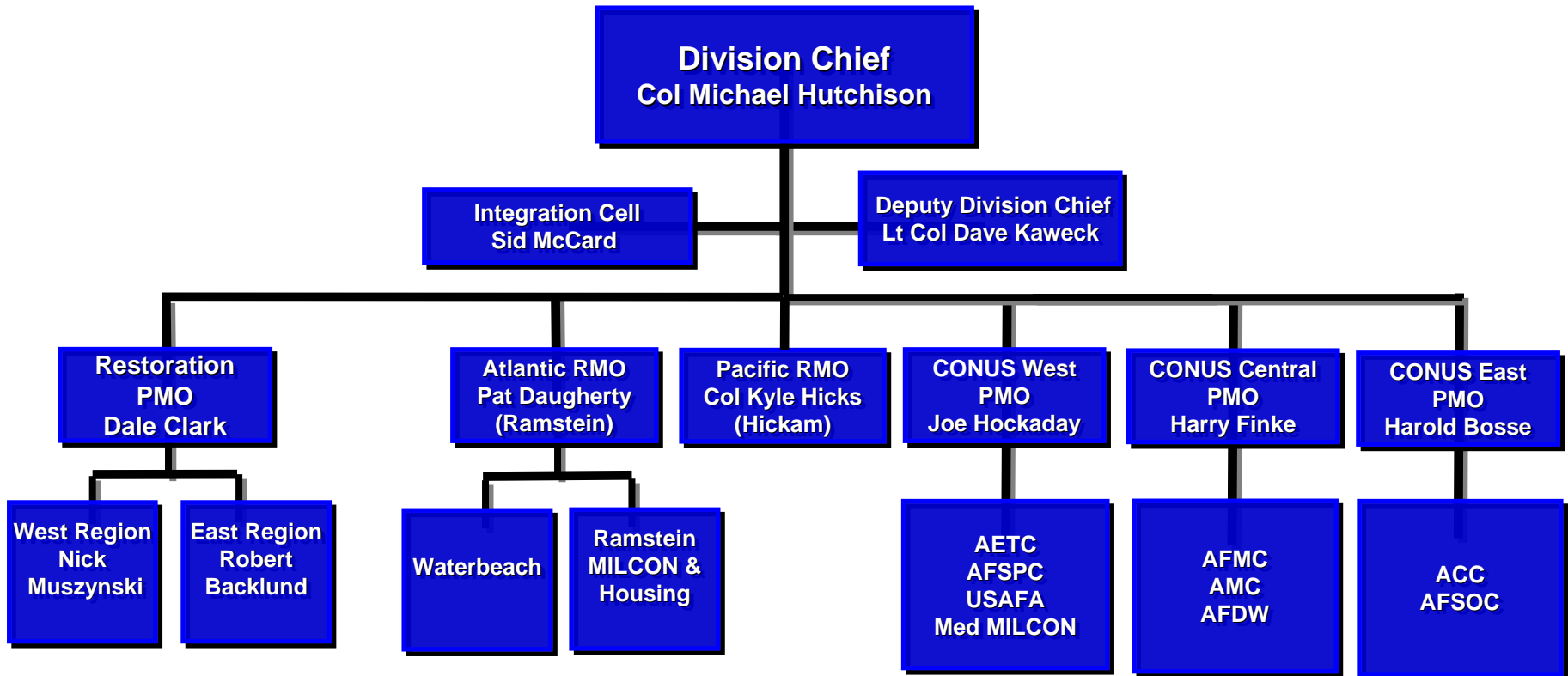


“Modernizing our aging air and space inventories...”

Integrity - Service - Excellence



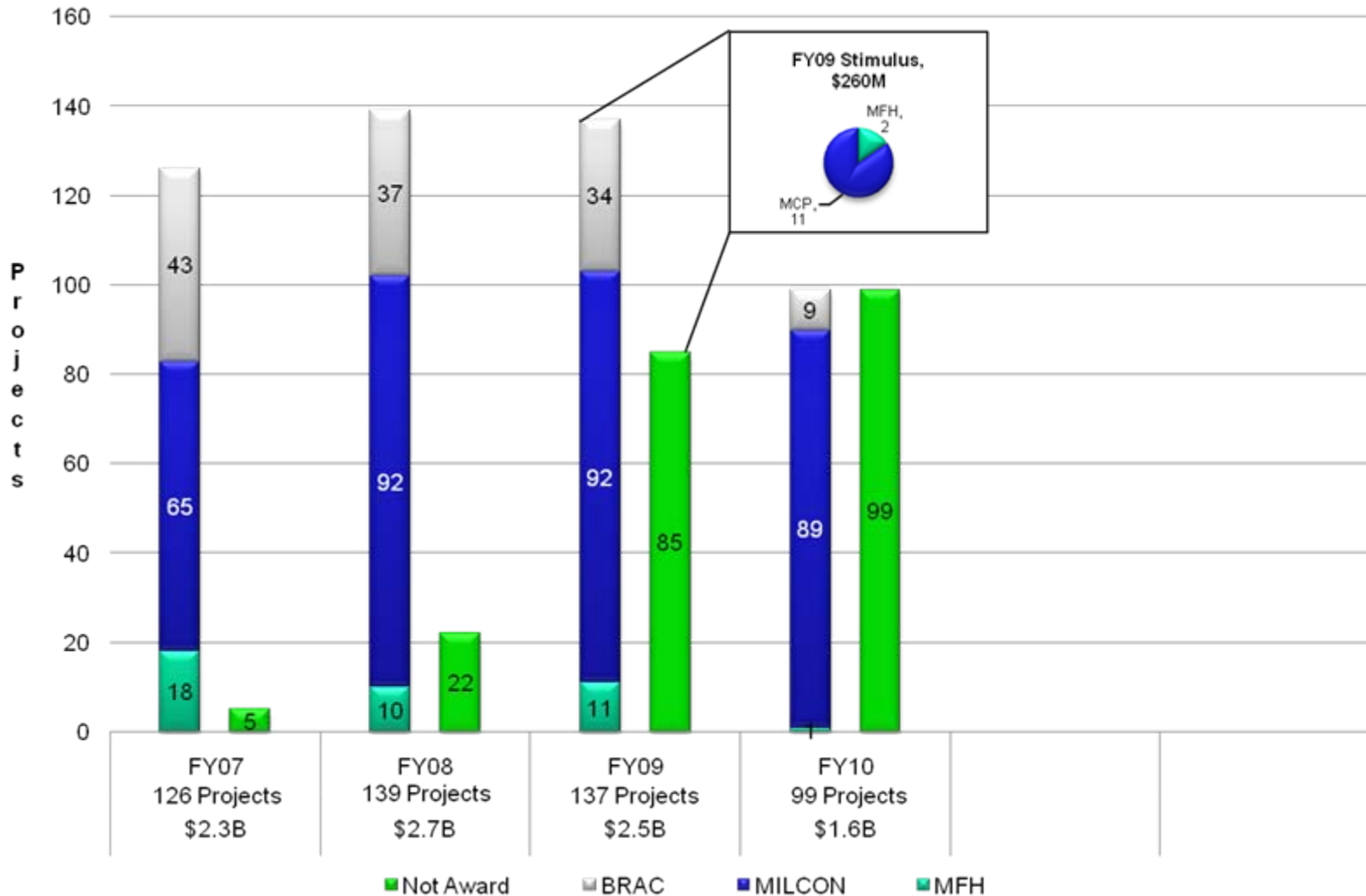
CM Organization



*RMO – Regional Management Office
PMO – Program Management Office*



FY07 – FY10 Program Summary





Execution Options

- **MILCON (FY09)**
 - **85% USACE and NAVFAC**
 - **15% AFCEE ***
 - **71% Design/Build vs. 29% Traditional**
 - **Future AF Goal is 90% Design/Build**
- **ERA - IRP Only (FY09)**
 - **31% USACE**
 - **60% AFCEE**
 - **9% Other**

* Based on dollar value including Contingency Construction and MFH



FY10+ MILCON Delivery Strategy

- Vast majority of all future projects will be Design-Build (or Adapt-Build)
- Building Information Modeling (BIM) based designs will be considered for all future vertical construction
- Standard RFPs and Designs will be used to the greatest extent possible/practicable
- All vertical, eligible construction projects will be certified LEED Silver at a minimum
- Enhanced Commissioning will be required on all applicable projects

“Get ready/smart if you intend to compete...”



FY10 MILCON Opportunities

- **99 MILCON projects in the FY10 President's Budget**
 - **Estimated value ~ \$1.6B**
 - **50 of 99 have PAs of <\$10M making them good candidates for SB set-asides**
- **30 - 40 potential Congressional Inserts are also expected**
 - **The majority of these projects will also have PAs of <\$10M**



FY10 MILCON Opportunities

MAJCOM	BASE	TITLE	DISTRICT
ACC	CREECH	UAS AT/FP SECURITY UPGRADES - TFI	SPL
ACC	DAVIS-MONTHAN	Dormitory (144 RM)	SPL
ACC	DAVIS-MONTHAN	HC-130J Simulator Facility	SPL
ACC	DAVIS-MONTHAN	HC-130J Squadron Operations Facility	SPL
ACC	DAVIS-MONTHAN	CSAR HC-130J Infrastructure	SPL
ACC	HOLLOMAN	F-22A CONSOLIDATED MUNITIONS MAINTENANCE - TFI	SPA
ACC	LANGLEY	WEST AND LASALLE GATE FORCE PROTECTION/ACCESS	NAO
ACC	MINOT	MHU-196 Munitions Trailer Storage Facility	NWO
ACC	MOUNTAIN HOME	Logistics Readiness Center	NWS
ACC	PALANQUERO	Air Base Development	TAC
ACC	SIGONELLA	Global Hawk Aircraft Maintenance and Operations Complex	EUR
AETC	ALTUS	REPAIR TAXIWAYS	SWT
AETC	EGLIN	F-35 DUKE CONTROL TOWER	SAM
AETC	EGLIN	BRAC - TAXIWAY EXTENSION	SAM
AETC	EGLIN	F-35 LIVE ORDNANCE LOAD AREA	SAM
AETC	EGLIN	STOVL SIMULATED CARRIER PRACTICE LANDING	SAM
AETC	EGLIN	F-35 POL OPS FACILITY	SAM
AETC	EGLIN	F-35 HYDRANT REFUELING SYSTEM PHASE I	SAM
AETC	EGLIN	F-35 JP8 FLIGHTLINE FILLSTANDS	SAM
AETC	EGLIN	F-35 JP8 WEST SIDE BULK TANK UPGRADES	SAM



FY10 MILCON Opportunities

MAJCOM	BASE	TITLE	DISTRICT
AETC	EGLIN	F-35 A/C PARKING APRON	SAM
AETC	EGLIN	F-35 PARALLEL TAXI-WAY LADDER	SAM
AETC	FORT SAM HOUSTON	BRAC-JOINT BASE SAN ANTONIO HEADQUARTERS FACILITY	SWF
AETC	GOODFELLOW	JOINT INTEL TECHNICAL TRAINING FACILITY PHASE 1 (TFI)	SWF
AETC	GOODFELLOW	STUDENT DORMITORY (100 RM)	SWF
AETC	KIRTLAND	MC-130 Simulator Facility	SPA
AETC	KIRTLAND	HC-130 Simulator Facility	SPA
AETC	LACKLAND	EVASION, CONDUCT AFTER CAPTURE TRAINING FACILITY	SWF
AETC	LACKLAND	BMT RECRUIT DORMITORY 2, PHASE 2	SWF
AETC	LACKLAND	BMT SATELLITE CLASSROOMS/DINING FACILITY, No. 1	SWF
AETC	RANDOLPH	BRAC Renovate Bldg 38 for IFF, Egress and Survival Shops	EXH
AFDW	ANDREWS	CONSTRUCT NEW MUNITIONS STORAGE AREA (MSA) (TFI)	NAB
AFMC	EGLIN	BRAC - EGLIN MCP NEW FITNESS CENTER	SAM
AFMC	EGLIN	BRAC - EGLIN ADD/ALT SCHOOL AGE FACILITY	SAM
AFMC	EGLIN	BRAC - EGLIN ADD/ALT TMO CARGO PROCESSING	SAM
AFMC	EGLIN	BRAC - CONSTRUCT NEW CIVIL ENGINEER FACILITY	SAM
AFMC	EGLIN	BRAC - ADD/ALTER SECURITY FORCES FACILITY	SAM
AFMC	EGLIN	DORMITORY (96 RM)	SAM
AFMC	HILL	F-22 Radar Cross Section Testing Fac	SPK
AFMC	TINKER	BUILDING 3001 HANGAR DOOR	SWT



FY10 MILCON Opportunities

MAJCOM	BASE	TITLE	DISTRICT
AFMC	WRIGHT PATTERSON	Information Technology Complex, PH 1	LRL
AFMC	WRIGHT PATTERSON	Conversion for Advanced Power and Thermal Research Lab	LRL
AFSOC	CANNON	CONSOLIDATED COMMUNICATIONS FACILITY	SPA
AFSOC	HURLBURT	REFUELING VEHICLE MAINTENANCE FACILITY	SAM
AFSOC	HURLBURT	ELECTRICAL DISTRIBUTION SUBSTATION	SAM
AFSPC	CLEAR	POWER PLANT FACILITY	POA
AFSPC	FRANCIS E WARREN	ADAL Missile Service Complex	NWO
AFSPC	MINOT	Missile Procedures Training Operations Facility	NWO
AFSPC	PETERSON	National Security Space Institute	NWO
AFSPC	VANDENBERG	CONSTRUCT CHILD DEVELOPMENT CENTER	SPL
AMC	DOVER	CONSOLIDATED COMMUNICATIONS FACILITY	NAP
AMC	DOVER	C-5 CARGO AIRCRAFT MAINTENANCE TRAINING FACILITY, PH 1	NAP
AMC	DYESS	C-130J ALTER HANGAR	SWF
AMC	LITTLE ROCK	C130 FLIGHT SIMULATOR ADDITION	SWL
AMC	MACDILL	DORMITORY (120 RM)	SAM
AMC	MACDILL	CHILD DEVELOPMENT CENTER	SAM
AMC	MACDILL	SOCCENT COMMANDANT & CULTURAL ENGAGEMENT GROUP FACILITY	SAM
AMC	PETERSON	ACTIVE ASSOCIATE SQUAD OPS/AMU (TFI)	NWO
AMC	TRAVIS	CONSTRUCT KC-10 CARGO LOAD TRAINING (CLT) FACILITY	SPK
CENTAF	AL MUSANAH	WRM COMPOUND	TAC



FY10 MILCON Opportunities

MAJCOM	BASE	TITLE	DISTRICT
CENTAF	AL MUSANAH	AIRLIFT RAMP AND FUEL FACILITIES	TAC
CENTAF	AL UDEID	BLATCHFORD-PRESTON COMPLEX, PHASE II	TAC
CENTAF	BAGRAM	PASSENGER TERMINAL	TAC
CENTAF	BAGRAM	CARGO TERMINAL	TAC
CENTAF	BAGRAM	AVIATION OPERATIONS & MAINTENANCE FACS	TAC
CENTAF	BAGRAM	EXPEDITIONARY FIGHTER SHELTER	TAC
CENTAF	CAMP BASTION	STRATEGIC AIRLIFT APRON EXPANSION	AFC
CENTAF	CAMP BASTION	CAS APRON EXPANSION	AFC
CENTAF	CAMP BASTION	ISR APRON	AFC
CENTAF	CAMP BASTION	SECURE RSOI FACILITY	AFC
CENTAF	CAMP BASTION	CARGO HANDLING AREA	AFC
CENTAF	CAMP BASTION	AVIATION OPERATIONS & MAINTENANCE FACS	AFC
CENTAF	CAMP BASTION	EXPEDITIONARY FIGHTER SHELTER	AFC
CENTAF	FOB DWYER	CARGO HANDLING AREA	TAC
CENTAF	FOB WOLVERINE	CARGO HANDLING AREA	TAC
CENTAF	KANDAHAR	TACTICAL AIRLIFT APRON	TAC
CENTAF	KANDAHAR	REFUELER APRON / RELOCATE HCP	TAC
CENTAF	KANDAHAR	CAS APRON EXPANSION	TAC
CENTAF	KANDAHAR	ISR APRON EXPANSION	TAC
CENTAF	KANDAHAR	AVIATION OPERATIONS & MAINTENANCE FACS	TAC



FY10 ERA Opportunities

Pre-RIP
RIP
Post-RIP

Pre-RIP
RIP
Post-RIP

Cleanup Phase	Number of FY10 Obligated <i>PROJECTS</i>	Total FY10 Amount
PA/SI/RI/FS Investigative Studies	17	\$ 23,888,066
ROD/DD Record of Decisions	24	\$ 4,376,861
RD Remedial Designs	26	\$ 7,040,900
RA-C (includes BD/DR) Remedial Action-Construction	57	\$ 108,130,524
RA-O Remedial Action-Operations	235	\$ 112,573,213
LTM Long-Term Management	82	\$ 14,724,228
PCO Project Closeouts	9	\$ 3,667,453
MMRP Military Munitions Response Program	69	\$ 92,010,246
MGT (includes RAB) Management	129	\$ 37,195,937
DSMOA	1	\$ 11,000,000
TOTALS	646	\$ 414,607,428



Summary

- **Our Services**
- **CM Organization**
- **Program Summary**
- **Execution Options**
- **FY10+ MILCON Delivery Strategy**
- **FY10 MILCON Opportunities**
- **FY10 ERA Opportunities**



UNITED STATES AIR FORCE



Back-Up/Alternate Slides



FY05 – FY09 Award Status

FY 05-09 Project Award Status				
	Total	Awarded	Percentage	Remaining
2005 Total	120	120	100%	0
2006 Total	138	135	98%	3
2007 Total	126	121	96%	5
2008 Total	139	117	84%	22
2009 Total	137	52	38%	85
Total Program	660	545	83%	115

As of: 7/22/2009